

The Means of Grace

March 24, 2024



It's tradition. Hundreds of thousands gather when a professional team wins their sport's championship. They gather for a parade, so that the crowds of adoring fans can hail their victorious team.

On Palm Sunday, the gospel writers tell us about a kind of victory parade—only, in this case, the crowds were not celebrating a past victory but anticipating one to come.

Jesus was riding into Jerusalem, and the crowds were convinced that he was the Messiah, the anointed Son of David who would redeem the people of Israel and set them free from their enemies. In the minds of many of them that day, that enemy was the Roman Empire, and the redemption was casting off the Romans' iron rule and restoring the kingdom of Israel.

In not too many days, many in the crowd would be disappointed. Jesus' enemies among the Jewish leaders would arrest him, and those Romans he was supposed to conquer would put him to an ignominious death on a cross.

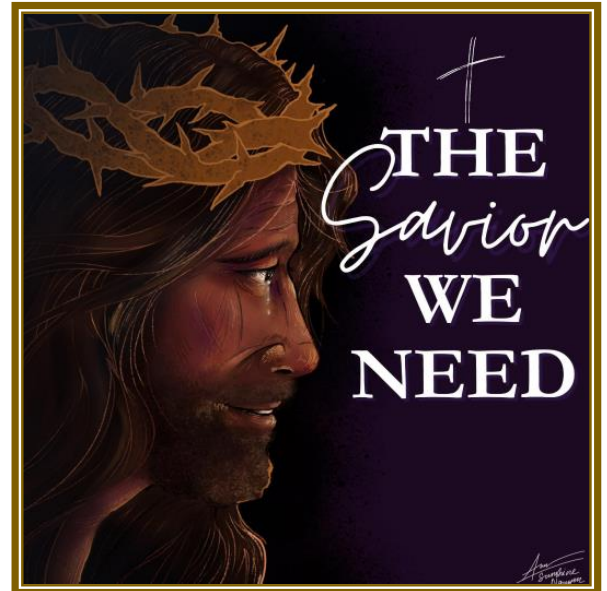
What went wrong? Were the crowds mistaken in identifying Jesus as the Messiah who would bring redemption? Not at all!

Centuries earlier, Zechariah, with a prophet's precision, pointed ahead to Jesus entering Jerusalem on Palm Sunday, and he told the people to rejoice. Their king was coming to them! Yes, he would come to them in lowliness, riding not on a royal stallion but on a humble donkey—but all the same he would come to them as their king.

Yes, hidden in that humility was the truth that the victory belonged to Jesus. "See, your king comes to you, righteous and victorious." Hidden beneath the shame of the cross was the glory of good news. On the cross, Jesus defeated the devil, silenced sin's charges against us, and robbed death of its sting.

The mistake the crowd made was that they just weren't thinking big enough. Jesus wasn't there to free his people from a temporary, earthly enemy. He was there to free them from their sin so that he could rule over them in righteousness for eternity.

This Palm Sunday, join your voice to the shouts of joy. Your king has come, lowly and riding on a donkey, all so that you could live under him in his kingdom eternally!



Devotions for Holy Week

To access the online flipbook
please go to:

<https://mlc-wels.edu/publications/2024-holy-week/>

Or, scan to your phone at:





Sunday **March 24, 2024 Palm Sunday**
Flowers: **Faye**
Comm. Prep. **Jensen**
 9:30 AM Worship with Holy Communion
 10:30 AM Fellowship
 11:00 AM Sunday School
 11:15 AM Bible Study
 6:00 PM Basketball

Monday **March 25, 2024**
NO SCHOOL-SPRING BREAK

Tuesday **March 26, 2024**
NO SCHOOL-SPRING BREAK

Wednesday **March 27, 2024**
NO SCHOOL-SPRING BREAK

Thursday **March 28, 2024-MAUNDY THURSDAY**
NO SCHOOL-SPRING BREAK
 Comm. Prep. Marilyn Baer
7:00 PM **WORSHIP SERVICE WITH HOLY COMMUNION**

Friday **March 29, 2024-GOOD FRIDAY**
NO SCHOOL-SPRING BREAK
 Afternoon Member Visits

7:00 PM **WORSHIP SERVICE**

Saturday **March 30, 2024-HOLY SATURDAY**
 9:00 AM Confirmation

Sunday **March 31, 2024-EASTER SUNDAY**
 7:00 AM SUNRISE WORSHIP SERVICE
 8:00 AM BREAKFAST
 9:30 AM EASTER WORSHIP
 10:30 AM FELLOWSHIP

IN PRAYER

Vanessa Hayden, wife of Greg Hayden. Greg has worked at our school during the repair and restoration process. This week Vanessa was diagnosed with stage 4 pancreatic cancer. We pray God blesses her treatment with great success and ask our gracious God for a miracle of complete healing.

James Settje who was injured in a skiing accident earlier in late February resulting in a severe concussion and soreness. James continues to recover at home.

Marilyn Kessenich, mother of Lynn Kraklow was called home to heavenly glory. She was 93 and had been in hospice care since June. She's now in her eternal home with Jesus her Savior and is reunited with loved ones in glory. A Christian funeral was held this past Thursday in Wisconsin.



Dorothy Elsasser was called home to heavenly glory this past week. We praise God that he has made her well again in heaven's glory and we long for our reunion. Funeral plans are still pending.



Sunday SCHOOL

ROOTED IN GOD'S WORD
Growing in Faith Together

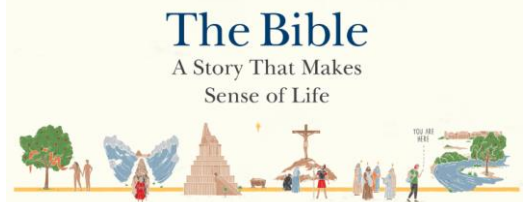
Sundays at 11:00 AM

Please plan on joining us after worship on Sundays for Bible Class and Sunday for every age! Following worship each Sunday we will continue to offer our refreshments & fellowship AND we will be adding to our opportunity for fellowship by offering Bible Class and Sunday School from 11:00 – 11:45. Please, plan to join us! Sunday School will be offered for kids Preschool – 8th. If you are interested in helping teach... please contact Pastor Bitter or Craig Baker.



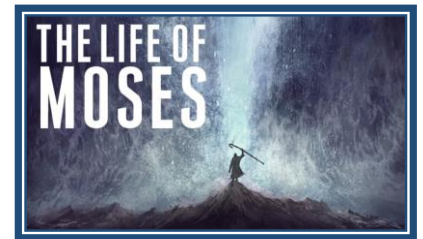
Sundays at 11:15 AM

Please plan on joining us after worship on Sundays for Bible Class as we continue our study of the Story of Scripture.
Teens to adults!



Wednesdays at 6:00 PM (On break for Lent)

Please plan on joining us on Wednesdays by clicking on to our Google Meet study. This fall we will begin a new study on the story of Moses. Join us as we discover the ways that God graciously equips us to bless others.



Saturdays at 9:00 AM

We are beginning our Confirmation Classes for students who are not able to attend during the week at GLS. This class is especially for 6th - 9th graders but younger students are also welcome to attend.



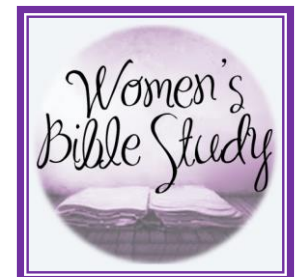
Saturday MARCH 23rd at 8:00 AM

Men's breakfast and bible study! Bring your sons! Once a month we will plan to meet again for bible study and breakfast at 8:00 AM at the SCHOOL!
Please let Pastor Bitter know if you'd be interested in attending or helping organize.



Saturday APRIL 13th, 2024 at 10:00 AM Women's Bible Study

Please join us at Grace School on Saturday, April 13th at 10:00 AM for our new Women's Bible Study. Childcare will be provided. Come spend some time in God's Word together!



What's Happening @Grace

Weekly Fellowship Food & Drinks



THANK YOU to those who have been so faithful in providing all the goodness we enjoy after worship! Please consider contributing and supporting the goodness we enjoy after worship each Sunday! Your gifts are appreciated!

Mowing! – The grass needs to be cut every week!

We need to cut every week again. Please consider signing up for spring and summer lawn care. The lawn at church needs you... can you sign up for a weekend to cut? **THANK YOU** to those who have been so faithful in taking care of the church property and making it beautiful!



Weekly Cleaning! – The church needs cleaning every week!



Please consider signing up for spring and summer church cleaning. The church building needs to be cleaned each week and we could use your help! **THANK YOU** to those who have been so faithful in cleaning the Lord's house and making it ready for worship!

Altar Flowers – Every week!

Please consider signing up for bringing altar flowers for our Sunday Worship. **We need flowers every week!** Signup sheet is located in the Fellowship Hall on the north facing wall.



PLEASE CONSIDER SIGNING UP TO HELP. WE NEED YOU



Supporting Our Neighborhood Foodbank – REVISED March7, 2024

Mainspring Foodbank appreciates your continued support. Our donation in February consisted of 54lbs of Food, 19lbs. of clothing & toys, and one tent.

For **MARCH**, please continue to donate basic food items, focusing on:

- Pasta
- Peanut butter & jelly
- Canned protein (tuna, chicken, & beef)

With winter still here, Mainspring could also use the following items:

- 1) Blankets (in good condition & clean)
- 2) Sleeping bags
- 3) Coats & jackets (all sizes, clean & in good condition)
- 4) Men's clothing

You may bring your donations anytime. Mary & Martha will then deliver the donated items by February 29th. There are baskets in the fellowship hall to place your food donations as well as clothing items.

If you have any questions or concerns, please call or text Leann Breza (360) 921-6673.

Mainspring Foodbank most-needed foods: (please no expired items or opened packages):

- Canned proteins like tuna, chili, salmon, ham
- Soup
- Rice
- Cooking oil
- Peanut butter
- Cup of noodles
- Canned vegetables
- Canned stew
- Canned fish
- Canned beans
- Pasta (all varieties)
- Pasta sauce
- Instant oatmeal
- Instant potatoes
- Shelf stable milk
- Juice
- Condiments
- Fruit snacks
- Crackers
- Sugar free snacks
- Snacks for High School students



MAINSRING



“I am the vine; you are the branches. If you remain in me and I in you, you will bear much fruit; apart from me you can do nothing... If you remain in me and my words remain in you, ask whatever you wish, and it will be done for you. This is to my Father’s glory, that you bear much fruit, showing yourselves to be my disciples. – John 15

We are *One Together* in ministry. Jesus is the Vine we are the branches and connected to him we will produce much! In fact, connected to Him all things are possible! This fall we will be asking you consider what your “branch” is in our ministry together. Connected to Jesus what gift do you have to use? Our *One Together* logo will help us identify your branch and your area of ministry to use your gift in. It is our prayer that together we discover that while we all have different gifts and abilities we are indeed *One Together* in Christ.

Look at the logo above. Think about what each symbol might mean and what area of ministry you can serve in!

Runners - Fellowship Events, Health, Well Being

Bible - Devotions, Bible Studies, Sunday School, Christian Education

Hand w/Leaves - Grounds Care, Altar Flowers

Money - Fundraising, Investment, Treasurer, Budgeting

Chrismon - Service Setup (Vestments Switching, Candles, Communion Setup/Cleanup), Worship Banners

Globe - Outreach, Missions

Open Door - Greeting

Praying Hands - Prayer Groups

Heart on Plate - In reach, Shut ins, Ill/Injured/Hospitalized, Fellowship Refreshments

Gear - Trustee, Facility Cleaning/Repair

Music Notes - Choir, Chanter, Vocalist, Instrumentalists, Organ, Piano

Little Hand in Big Hand - Nursery Care, Assist New Parents or Parents in General

Lectern - Liturgy/Readings, Elders, Bible Studies

Hand in Hand - Serve on Committees/in Groups - Care Committee for Called Workers, Mary Martha, Ushers, Church Council

Dove - Inreach, Visiting Shutins, “Sunshine Member” (sends cards on various occasions)

Wedding Rings - Couple’s Inreach/Support, Marriage

Grace School



The Eagle Message Grace Lutheran School DECLARE *His* PRAISES

March 19, 2024

Chapel Service at 8:30 on Wednesday

We will have our weekly school-wide Chapel Service on Wednesday morning at **8:30**. Mr. Eternick will lead our worship this week. An offering envelope is being sent home for your child's mission offering.

We will support mission work at **Peridot-Our Savior's Lutheran School** on the San Carlos Apache Reservation in Arizona for the *Second Semester*. Your gifts will help ministry at the school to reach more children and their families with the gospel. <http://www.poscrusaders.org/> Offerings gathered so far total \$232.44. Thank you.



LENT

Wednesday Devotions for Lent

The Lenten season leading up to Easter began on Ash Wednesday. There will be Devotions & Dinner on Wednesdays at Grace Lutheran Church (7610 NE Fremont St.). Dinner starts at 6:00; devotion starts around 6:30. The theme for the meal this Wednesday, March 20th is "All American".

You are also welcome to attend a worship service at Peace Lutheran Church in Vancouver at 4:00 & 7:00; or Beautiful Savior Lutheran Church in Hillsboro at 7:00.



March Hot Lunch THIS FRIDAY

This month's Hot Lunch will be served on **Friday, March 22nd**. The meal will include Turkey, Mashed Potatoes, Salad, Ice Cream and Drinks. Cost is \$5 per person. Payment can be made with Cash or Check (made out to Working Eagles).



Palm Sunday March 24

K-8th grade students invited to sing

The Kindergarten through 8th grade students are *invited* to sing and carry palm branches on **Palm Sunday, March 24th** for the 9:30 service at Grace Lutheran Church, 7610 NE Fremont St.

NO CLASSES - NEXT WEEK

Spring Break March 25-29

There will be **NO CLASSES** for Preschool - 8th grade from **Monday March 25 through Friday March 29** for our Spring Break. Classes resume on Monday, April 1st.

ENROLL NOW!

Re-enrollment DUE this FRIDAY MARCH 22

In order to plan ahead for the next school year, we are asking all current GLS families to let us know if they will *or will not* be re-enrolling their children.

All families have received an email from Brightwheel with a direct link to re-enroll for next year. Please re-enroll on your Brightwheel account by Friday March 22, 2024.

The **Tuition and Financial Aid** information for 2024-2025 is available on our website:

www.gracepdx.com/admissions

3rd quarter Report Cards

Report cards for the Third Quarter will be sent home with students on **Tuesday April 2nd**.



The April calendar is attached. Please refer to it for school activities in the coming month.

RUNNING TO REBUILD

<https://pledgeit.org/running-the-extra-mile-for-grace-lutheran-school>

Running to Rebuild

I think you probably all remember the ice storm that hit the Portland area this January. Thousands of people felt the effects of the ice and cold- being left without power, making homes cold, and for some even having their pipes burst leaving an enormous amount of damage behind.

Grace Lutheran School was not immune to the damage. During the storm, pipes burst inside their kindergarten and pre-school classrooms leaving the rooms completely unusable. Efforts have been ongoing to restore these classrooms, but the financial toll has been significant!

This April 19th, I (Pastor Bourman) am running in the **Banana Slug Backyard Ultra**. It's a crazy running event. Here's how it works! Every hour, on the hour, each runner will line up on the start line and run a 4.16 mile loop. (Why that number? So that every 24-hour period marks exactly 100 miles!) You are free to run whatever pace you like. If you run quickly, you have more time to rest. If you run slowly, you don't tire as quickly. The race has no finish line, and only ends when there is only one person left.

If you're interested in a video of how this race works, <https://vimeo.com/823175441>

I am asking you to support Grace Lutheran School by pledging a dollar amount for each loop that I run. For example, if you pledge \$5 per loop and I run 5 loops, the donation is \$25 total. If you pledge \$10 per loop and I run 20 loops, the donation is \$200 total.

Please do consider giving, whether it's a little or a lot! Each dollar will go directly to Grace Lutheran School's efforts to restore the classrooms of its youngest students!

COLLAPSE

PLEDGE NOW



Based on 15 estimated laps, each worth \$73.33

SHOW DETAILS

43 days left

5 pledgers

SHARE THIS CAMPAIGN



GRACE SCHOOL RESTORATION & REPAIR PROGRESS

During this past winter storm our Preschool and Kindergarten classrooms were affected by a pipe burst, necessitating a temporary relocation to the gym and office area. Thank you to everyone who has been able to stop in and lend a hand. You have made a significant difference! We also had a very large tree fall on our property.



IN OUR CIRCUIT!



International Youth Rally

WELS International Youth Rally attendees come from huge churches in big cities and small churches in farming communities, from Alaska to Texas. And everywhere in between. No matter where you come FROM, when you come together at a youth rally, you're home! Home with your family of believers.

That's a big family! You get to say the Lord's Prayer and sing praises to our Savior with thousands of people. That WILL give you goosebumps.

A youth rally is designed for teens. Workshops hit timely teen topics. Performances and recreation are planned with teens in mind. There's time to discuss

issues, time to eat, time to play frisbee, and time to just chill!

Some have said that the youth rally changed their lives. I won't go as far as to say that it WILL DEFINITELY change yours or the lives of your church's teens. But it may: one may be motivated to pursue the ministry; another may meet a new lifelong friend; another may confide in a workshop leader about a struggle with temptation. Front and center at the youth rally is the gospel of Jesus Christ.

CANYONVIEW SILVERTON IS BACK... OREGON BIBLE CAMP!



Lutheran Bible Camp returns to beautiful Camp Canyonview in Silverton June 23-28. This is a wonderful opportunity for children going into grade 4-12 to make new Christian friends and spend time with old ones. Daily devotions, Bible studies, and the example of Christian adults will help feed and nurture the faith. Crafts, outdoor skills, sports, swimming, and other activities from the crazed mind of Pastor Tembreull provide fun for everyone and opportunities to build friendship and teamwork. Details on costs and registration dates will soon

follow but mark your calendars and make your plans today! If you have any questions call or email Pastor Tembreull: pastor@corvallislutherans.org or 5412316189. You can also follow Lutheran Bible Camp-Oregon on Facebook.

Come join us!

LWMS Cascade Circuit **SPRING RALLY**

Grace Lutheran Church, Portland, Oregon

Saturday, April 27, 2024 9:30 am – 3:00 pm



“Rooted in Hope”

Guest Speaker: Mr. Chris Mundstock

Teacher at Peridot-Our Savior's Lutheran School,

San Carlos Apache Reservation

Activities Devotions Fellowship Music

Lunch Mission Displays Door Prizes

Please send your mission money by April 20, 2024 to:

Brenda Cowdery, 6872 SE Borwick St. Hillsboro, OR 97123

Please wear GREEN and bring an UMBRELLA

for a special Cascade Circuit photo shoot!!



FROM THE DISTRICT

This past month...

- **ELHS Drama** put on four musical performances for several of our TELSS schools, ELHS students and staff, and guests. We are blessed by the many talents of our students and the opportunity they have to share those gifts with others.
- **Career Day** this year had over 35+ volunteers and presenters ranging from artists to pilots, engineers, doctors/dentists, marketing, trucking and machinists, and many more. We are so grateful for all the people willing to support our students and offer their knowledge and connections to our Evergreen family.
- **WLC representative** Pastor Wayne Shevy came to Evergreen to talk about the opportunities their college has for our students and how they can use their gifts in their lives.
- **ELHS Choir** has been doing a lot of traveling recently. This past month they have sung at Calvary, Holy Trinity, Parkland (twice), Light of Life, and Faith.
- **Accredited.** Evergreen is an accredited school. Meaning we need to go through our recertification every 6 years. 2024 is our year for renewal and it is no small task, needing to provide evidence for over 206 standards. It is a great opportunity to have outside eyes look at our school and tell us where we are doing well and give us some things to continue to strive for into the future. We were given wonderful scores and feedback. Here are a few key points.
 - o **Some of the high praises were...**
 - ✓ **Overall culture with students, faculty, and families.**
 - ✓ **The Board and administration for using every available source to evaluate the ministry for continued growth.**
 - ✓ **Financial management and planning for the future.**
 - o **Things to continue to work on...**
 - ✓ **Implementing some of the new synod evaluations for our staff.**
 - ✓ **Documenting our use of local pastors after times of crisis.**
 - ✓ **Finalize our curriculum plan and implement that plan. Curriculum planning is an ongoing process. The visiting team encouraged us to continue working on that plan and better document both short-term and long-term progress.**
- **ALHS Conference.** Every year Kyle Raymond and I attend Area Lutheran High Schools (ALHS) Conference with our board chairman, Brandon Vukelich. That was this past week in Milwaukee, Wisconsin. This is a great opportunity to get together with the other Area Lutheran High Schools to discuss the challenges in our ministries and work together to serve our families the best we can.
- **Winter Sports.** Our winter sports season has ended. Wrapping up last weekend with our girls basketball team making it to the regional finals. Our spring sports season started on Feb. 26th with track and baseball. We would love to see you at some games and meets. Check either the app or our sports schedule on our website.
- **Website.** On the topic of our website. We have a new one. Take a look at www.elhs.org.

Coming in March.

- ✓ **March 7-9 – Junior Eagle Classic grade school basketball tournament at Evergreen.**
- ✓ **March 14-15 – Teacher Conference at Christ the King in Bremerton.**
- ✓ **March 27th – ELHS Easter Concert at 7 PM**
- ✓ **April 1-5 – Spring Break**
- ✓ **April 13th – ELHS Auction – tickets available to purchase online!**

We are so grateful for the ministry we have at Evergreen and the families we get to share the gospel with. It was such a blessing to have the accreditation committee come in with a fresh set of eyes and say good things are happening at Evergreen. It is exciting to be part of the growth of our teens and the growth of our school. Thank you to YOU, for being a huge part of our growth. Let me know if you would like to set up a meeting to discuss some of the things we are working on and how you can be part of it.

Thank you for all your support. We are all in this together. Thank you again for joining us in our mission.
In Christ, Ryan Schmeling - Director of Mission Advancement

FROM THE WELS

We invite all singles (widowed, divorced, or never married) to join us at the 2024 WELS/ELS Singles Retreat for a weekend of fellowship and fun! The retreat will be April 26-28, 2024 at Camp Shiloh in Pittsburg, TX. Our theme is "Living In Our Season". The price is \$150. You can register at wels-els-singles.com/2024-texas-retreat (<http://wels-els-singles.com/2024-texas-retreat>). Any questions can be sent to texassingleswels@gmail.com.

We have included 2 of the poster/flyer sizes below. We have also included an attachment of a full size page flyer. If interested in other sizes, please feel free to visit the website listed above. These include a QR code for those that would like quick access to the link. Please feel free to use and share these!

We appreciate your helping us reach out to those who are single in our churches. Let us know if you have any questions!



WELS & ELS SINGLES RETREAT

LIVING IN OUR SEASON
April 26-28, 2024
@Camp Shiloh • Pittsburg, Texas

REGISTER BY APRIL 8TH
www.wels-els-singles.com/2024-texas-retreat



LUTHERAN Adoption CONFERENCE

FOR SUCH A TIME AS THIS
ESTHER 4:14

**TO CONNECT,
ACT AND IMPACT
THE FUTURE OF
BIBLICALLY-BASED,
CHRISTIAN
ADOPTION**



 **APR 10-11, 2024**

 **HYATT REGENCY
INTERCONTINENTAL
AIRPORT
HOUSTON, TX**



Each week we will highlight ministry reports in the WELS annual report:



Called to serve WELS Christian Aid and Relief

WELS Christian Aid and Relief reflects Christ's love and compassion to those suffering as the result of disasters or other hardships as well as through humanitarian aid distributed through WELS' home and world missions.

Leaders from WELS Christian Aid and Relief traveled to a predominantly Hindu country in South Asia early in 2023 to see how humanitarian aid grant money is being used there. While there, Christian Aid and Relief leaders attended the following humanitarian aid events:

- **Sewing schools:** These schools provide women with a skill that enables them to set up a small business in their village and earn income to support their families. The women are given the foot-pump sewing machine on which they are trained.
- **Free medical camps:** These two-day medical camps serve about 500 people, offering basic dental, medical, and vision care.
- **Education for young mothers:** Infants and toddlers are weighed and given check-ups. Participants receive information about proper nutrition and basic food staples.
- **Smokeless stove distribution:** Many heat their homes and cook their meals over open fires inside their homes. The smoke causes respiratory illnesses and negatively impacts vision. At this event, one hundred smokeless, wood-burning steel stoves with chimneys were distributed, offering families a safer alternative.

"It's a joy to know that these acts of kindness lead to many opportunities to share the reason for our hope in Christ," says Daniel Sims, director of WELS Christian Aid and Relief. WELS is working with 89 congregations and 7,000 Christians in this area of South Asia.

Domestically, WELS Christian Aid and Relief provides matching grants of up to \$2,500 to self-supporting WELS congregations once a year to carry out compassion ministry in their communities. In October 2023, WELS Christian Aid and Relief approved a Community Care and Compassion matching grant for Christ, Denver, Colo., to assist the congregation as it reaches out to Venezuelan migrants in its area.

Only a month after receiving the grant, Paul Biedenbender, pastor at Christ, Denver, noted: "After a Bible study on baptism, six children were baptized (two others will be soon when the fathers have a day off of work). Combined with a similar event two weeks before, we have baptized 15 children. Warm clothing and coffee during the week keeps bringing people in who then also receive pastoral care."

For more information, visit wels.net/relief.

The impoverished island nation of Haiti is experiencing increasing gang violence following political unrest. The Latin America mission team is in regular contact with Haitian Lutheran Pastor Rona Abraham, who is currently safe. He and his family reside in the northern part of the country, which has been less affected than the south. Many of WELS-affiliated Lutheran churches, schools, and orphanages—and our Christian brothers and sisters who serve them—are in the south. [WELS Christian Aid and Relief](#) is exploring ways that WELS might be able to bring aid to those who are suffering. However, the current security situation makes this very difficult. WELS Christian Aid and Relief will continue to explore options and provide updates if it finds an opportunity to help. In the meantime, continue to keep the people of Haiti in your prayers.



Boards & Committees at Grace

Church Council

Juan Garcia – President
Josh Luplow – 1 VP & BOE Chair
Jon Cohrs - 2 VP & Secretary
Larry Glasheen – Ministry CFO
Dan Paschke – GLS Finance
Thad Bitter – Pastor
Justin Eternick – Principal



Board of Education

Josh Luplow – Chair
Michael Godish
Dave House
James Settje
Tamm Godish - Preschool
Thad Bitter – Pastor
Justin Eternick – Principal



Board of Elders

Craig Baker – Head Elder
Courage Mudzongo
Len Stadler
Josh Luplow
Pastor Bitter



Worship Committee

Marilyn Baer
Mark Leitzke
Sue Hartwig
Melissa Baker
Olivia Baker
Jacob Meyer
Pastor Bitter



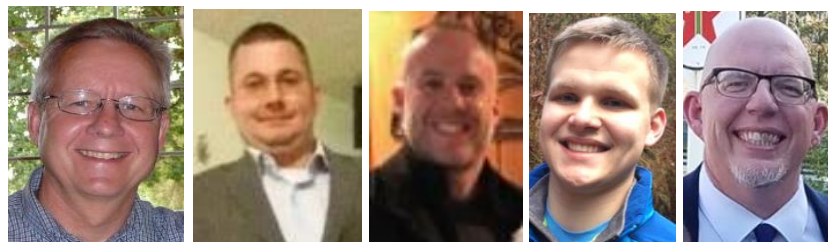
Mary & Martha

Sara Hehr – President
Elke Werner – Vice President
Linda Bern – Secretary
Cathie Gillespie - Treasure
Leann Breza – LWMS
Pastor Bitter



Trustees

Ed Gillespie
Brian Boyer
Matt Ginnow
Kyle Leitzke
Tyler Hafner – GLS Custodian



DEVOTIONAL THOUGHTS FOR THE WEEK OF PALM SUNDAY 2024

Sunday Zechariah 9:9

- Define whom Zechariah is addressing.
- What is the significance of the one coming being righteous and having salvation?
- What is the significance of this King entering Jerusalem on a donkey?
- Did he come to rule or serve? Explain.

Monday Zechariah 9:10

- What does the first part of this verse symbolize?
- What is the peace which this King will proclaim?
- How long will this King reign? Why is this significant and meaningful for us?

Tuesday Philippians 2:5-8

- What is our natural attitude? What is to be our converted attitude? Describe.
- How did Jesus make himself nothing? What did he come to be?
- What is the final and disgusting step of his humiliation?
- Why did he permit this to happen to him who is God's Son?

Wednesday Philippians 2:9-10

- With what event did Jesus' humiliation become exaltation?
- Describe being "exalted to the highest place"?
- How does the Father expect all people to respect his Son?
- Why would we people do this? Where will we ultimately arrive?

Thursday Mark 11:1-3

- What had Jesus been telling his disciples all the way on this current trip to Jerusalem?
- What instructions did Jesus now give them?
- How do these instructions seem out of character with what he said on the way?
- Why can we say this is another miracle?




Friday Mark 11:4-8

- To their surprise what did the disciples find?
- What did some bystanders say?
- How did they respond when they told them what Jesus had said?
- Describe what happened when Jesus began to ride the donkey into Jerusalem?
- Do we have a miracle going here?

Saturday Mark 11:9-10

- How did this procession become a foretaste of what Paul described to the Philippians above?
- For what two entities did the people ask blessings? Why?
- What is meant by "Hosanna in the Highest"?
- How does this relate to what the angels sang when Jesus was born?

Grace March 2024

Sun	Mon	Tue	Wed	Thu	Fri	Sat
					1 9:20 AM PK Jesus Cir Afternoon Member Visits	2 9:00 AM Confirmation
3 Lent 3 9:30 Worship 10:30 Fellowship 11:00 Sunday Sch 11:15 Bible Study	4 6:30 PM GLS Board of Education	5 8:00 AM 7-8 Confirmation	6 8:00 AM Indv Confirm 8:30 AM Chapel 9:00 AM 7-8 Conf LENT DINNER AND DEVOTION 6:00 PM	7 8:00 AM 7-8 Confirmation GLS Basketball Tournament At ELHS	8 8:00 AM 5-6 Confirmation 9:20 AM PK Jesus Cir GLS Basketball Tournament At ELHS	9 9:00 AM Confirmation
10 Lent 4 9:30 Worship Communion 10:30 Fellowship 11:00 Sunday Sch 11:15 Bible Study	11	12 8:00 AM 7-8 Confirmation 10:00 AM Mary Martina 3:30 PM Staff Meeting	13 8:00 AM Indv Confirm 8:30 AM Chapel 9:00 AM 7-8 Conf LENT DINNER AND DEVOTION 6:00 PM	14 No School Teacher Conference	15 No School Teacher Conference Afternoon Member Visits	16 9:00 AM Confirmation 10:00 AM Women's Bible Study Planning Meeting
17 Lent 5 9:30 Worship 10:30 Fellowship 11:00 Sunday Sch 11:15 Bible Study	18	19 8:00 AM 7-8 Confirmation 3:30 PM Worship Comm 6:30 PM Elders	20 8:00 AM Indv Confirm 8:30 AM Chapel 9:00 AM 7-8 Conf LENT DINNER AND DEVOTION 6:00 PM 6PM Bend Bible Class	21 8:00 AM 5-6 Confirmation 6:30 PM Church Council Leadership Meeting	22 8:00 AM 7-8 Confirmation 9:20 AM PK Jesus Cir Afternoon Member Visits	23 9:00 AM Confirmation 8:00 AM Men's Breakfast & Bible Study
24 PALM SUNDAY 9:30 Worship Communion 10:30 Fellowship 11:00 Sunday Sch 11:15 Bible Study	25 Cleansing Temple 	26 Teaching People 	27 Plotting against Jesus 	28 Maundy Thursday Maundy Thursday Worship 7:00 PM 	29 Good Friday  Good Friday Worship 7:00 PM	30 Holy Saturday 
31 Easter 7:00 AM Sunrise Worship 8:00 AM Breakfast 9:30 AM Easter Worship 10:30 AM Fellowship	No School - GLS Spring Break Week 